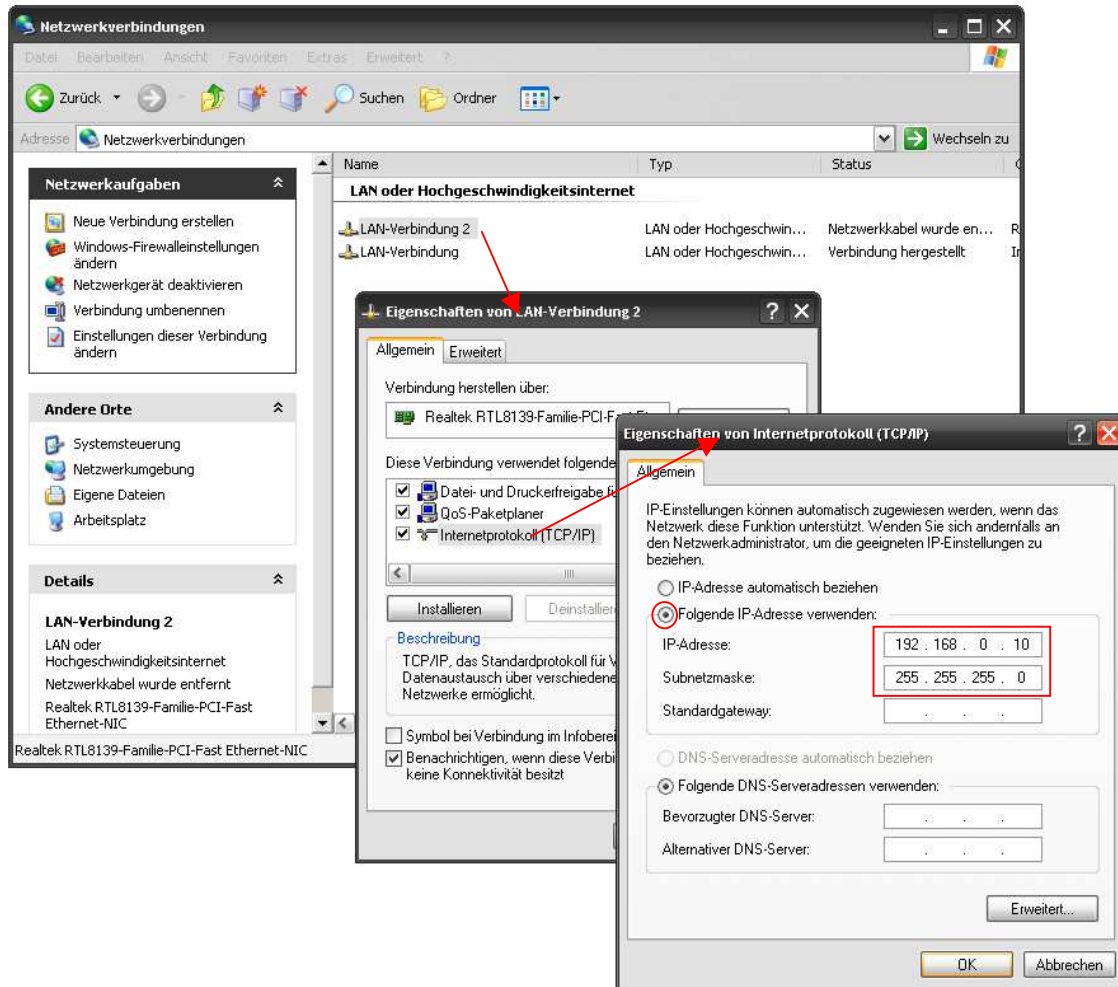


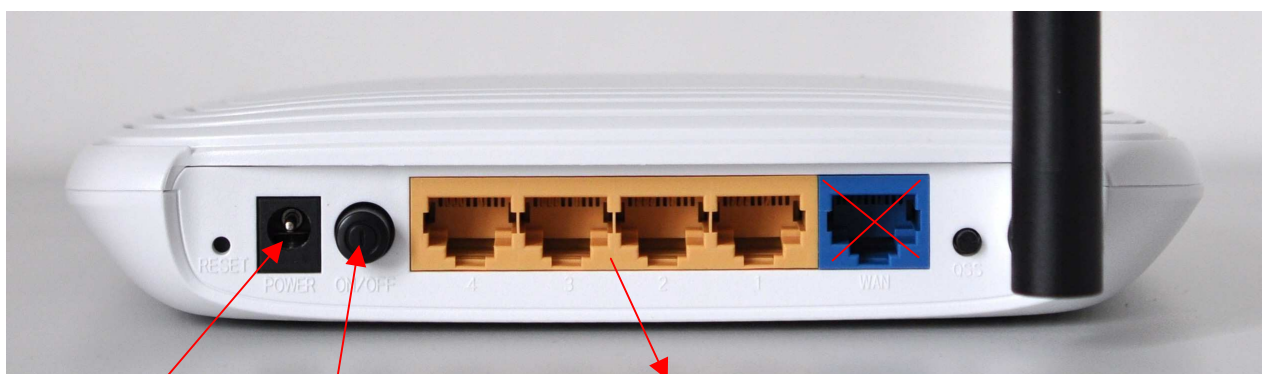
# Z21-Router Konfiguration

(Model No.: TL-WR740N)

## 1. PC ETH-Einstellen:



## 2. Verbindung zum PC:

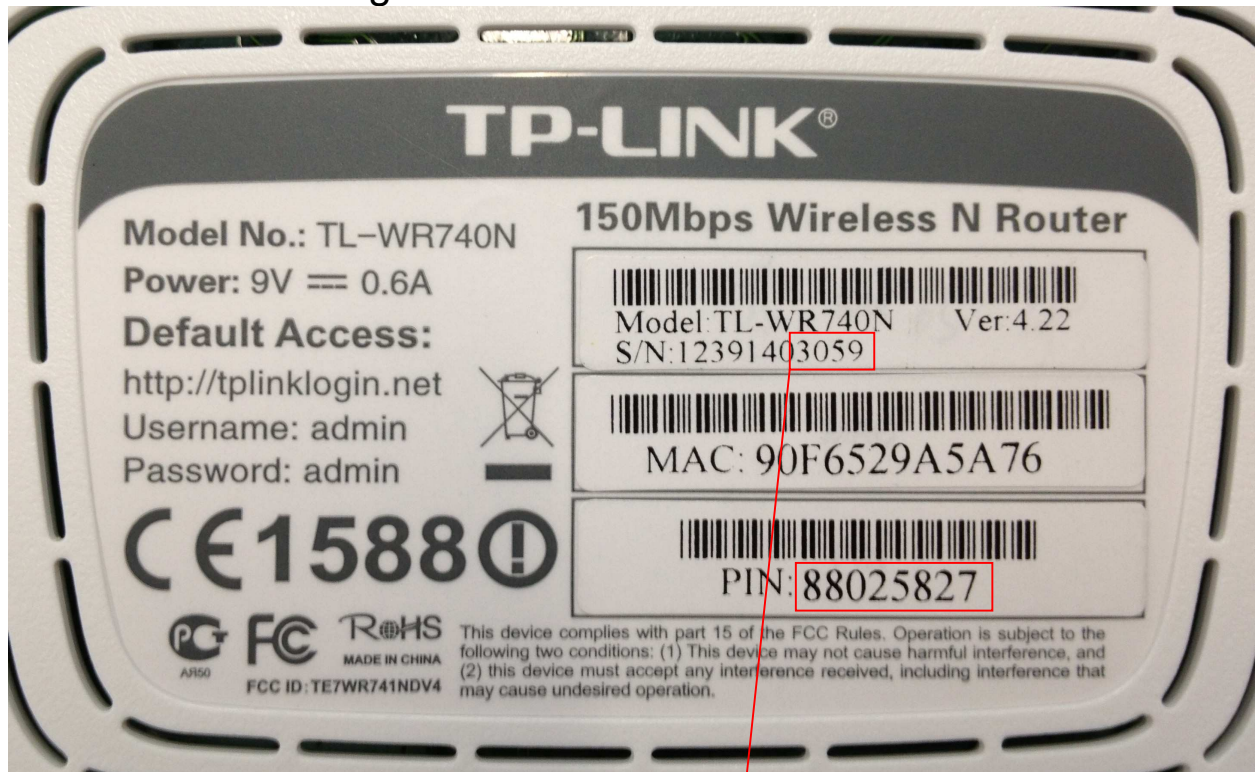


Netzteil

Einschalten

Verbindung zum PC

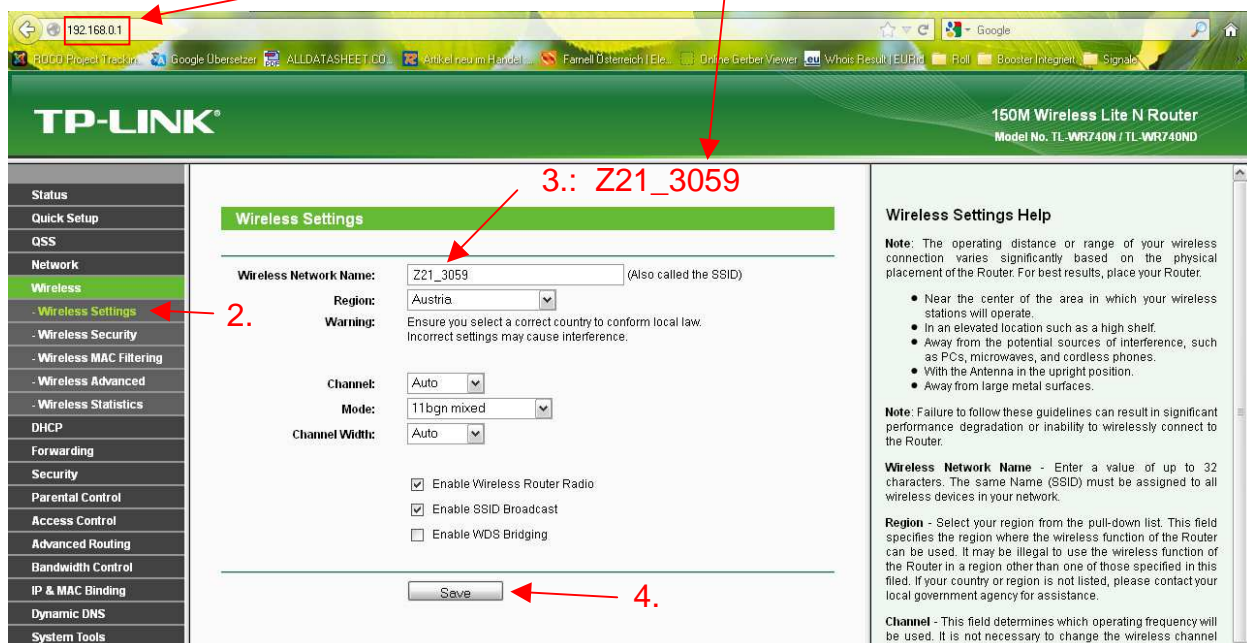
### 3. Am Router Konfigurieren:



Anmelden und SSID:

User: admin  
 Passwort: admin

1. Adressleiste: 192.168.0.1



## Z21-Router Konfiguration

Pin:

**TP-LINK®** 150M Wireless Lite N Router  
Model No. TL-WR740N / TL-WR740ND

Disable security

WEP

Type: Automatic  
WEP Key Format: Hexadecimal

Key Selected	WEP Key (Password)	Key Type
Key 1: <input type="radio"/>		Disabled
Key 2: <input type="radio"/>		Disabled
Key 3: <input type="radio"/>		Disabled
Key 4: <input type="radio"/>		Disabled

WPA/WPA2 - Enterprise

Version: Automatic  
Encryption: Automatic  
Radius Server IP:   
Radius Port: 1812 (1-65535, 0 stands for default port 1812)  
Radius Password:   
Group Key Update Period: 0 (in second, minimum is 30, 0 means no update)

WPA/WPA2 - Personal(Recommended)

Version: Automatic(Recommended)  
Encryption: Automatic(Recommended)  
Password: 880256271  
(You can enter ASCII characters between 8 and 63 or Hexadecimal characters between 8 and 64.)  
Group Key Update Period: 0 Seconds (Keep it default if you are not sure, minimum is 30, 0 means no update)

The change of wireless config will not take effect until the Router reboots, please [click here](#) to reboot.

Save

**Wireless Security Help**

You can select one of the following security options:

- Disable Security** - The wireless security function can be enabled or disabled. If disabled, the wireless stations will be able to connect the Router without encryption. It is recommended strongly that you choose one of following options to enable security.
- WEP** - Select 802.11 WEP security.
- WPA/WPA2 - Enterprise** - Select WPA based on Radius Server.
- WPA/WPA2 - Personal** - Select WPA based on pre-shared passphrase.

Each security option has its own settings as described follows,

**WEP**

**Type** - You can select one of following types,

- Automatic** - Select **Shared Key** or **Open System** authentication type automatically based on the wireless station's capability and request.
- Open System** - Select 802.11 Open System authentication.
- Shared Key** - Select 802.11 Shared Key authentication.

**WEP Key Format** - You can select **ASCII** or **Hexadecimal** format. ASCII Format stands for any combination ... of ... keyboard

**Reboot**

Click this button to reboot the device:

Reboot

Are you sure to reboot the Router?

OK Abbrechen

Warten:

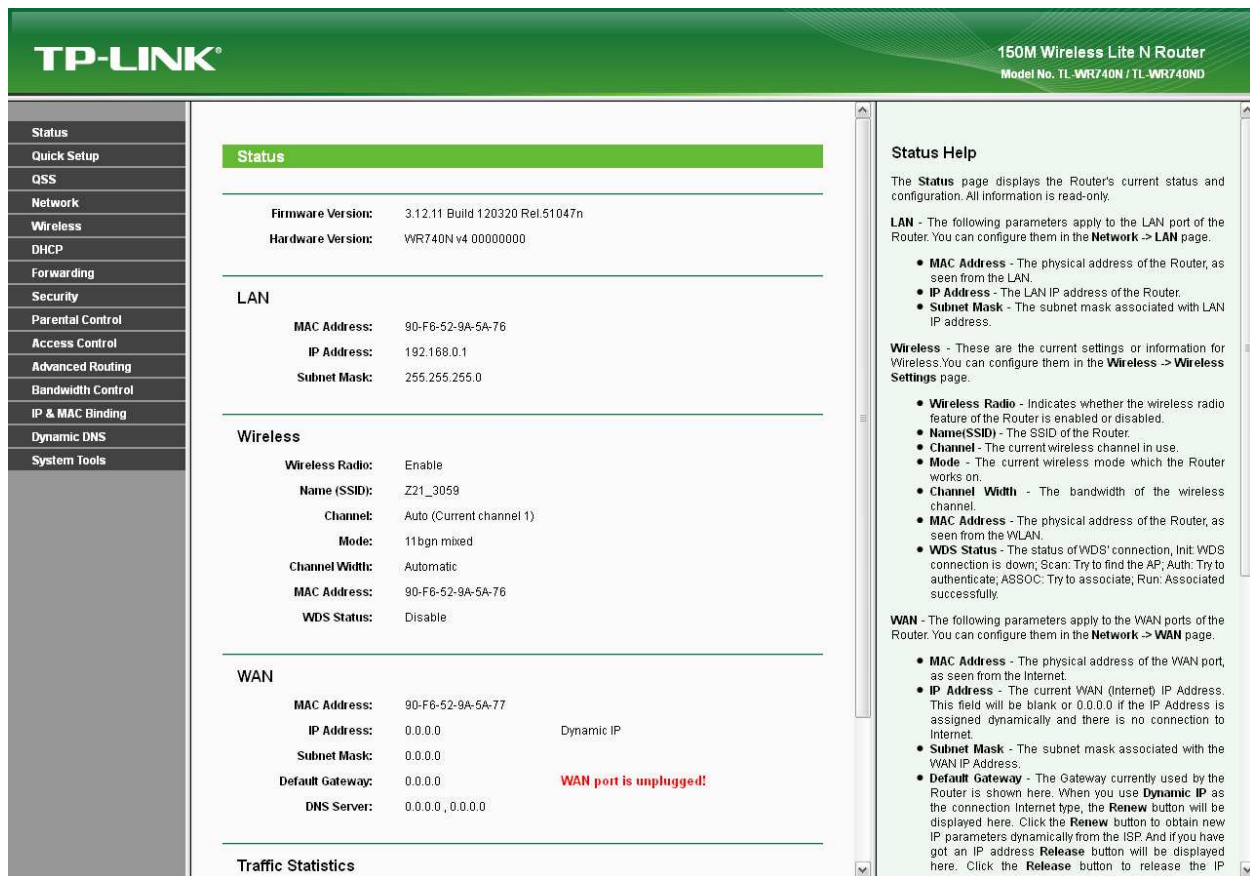
**Restart**

Restarting...

17%



Wenn nach ca. 20-30sec das nachfolgende Bild angezeigt wird, kann abgesteckt werden:



The screenshot shows the TP-LINK 150M Wireless Lite N Router (Model No. TL-WR740N / TL-WR740ND) Status page. The page is divided into several sections: Status, LAN, Wireless, WAN, and Traffic Statistics. A 'Status Help' sidebar is also visible on the right.

**TP-LINK®** 150M Wireless Lite N Router  
Model No. TL-WR740N / TL-WR740ND

**Status**

**Firmware Version:** 3.12.11 Build 120320 Rel.51047n  
**Hardware Version:** WR740N v4 00000000

**LAN**

**MAC Address:** 90-F6-52-9A-5A-76  
**IP Address:** 192.168.0.1  
**Subnet Mask:** 255.255.255.0

**Wireless**

**Wireless Radio:** Enable  
**Name (SSID):** Z21\_3059  
**Channel:** Auto (Current channel 1)  
**Mode:** 11bgn mixed  
**Channel Width:** Automatic  
**MAC Address:** 90-F6-52-9A-5A-76  
**WDS Status:** Disable

**WAN**

**MAC Address:** 90-F6-52-9A-5A-77  
**IP Address:** 0.0.0.0 Dynamic IP  
**Subnet Mask:** 0.0.0.0  
**Default Gateway:** 0.0.0.0 **WAN port is unplugged!**  
**DNS Server:** 0.0.0.0, 0.0.0.0

**Traffic Statistics**

**Status Help**

The **Status** page displays the Router's current status and configuration. All information is read-only.

**LAN** - The following parameters apply to the LAN port of the Router. You can configure them in the **Network** -> **LAN** page.

- MAC Address** - The physical address of the Router, as seen from the LAN.
- IP Address** - The LAN IP address of the Router.
- Subnet Mask** - The subnet mask associated with LAN IP address.

**Wireless** - These are the current settings or information for Wireless. You can configure them in the **Wireless** -> **Wireless Settings** page.

- Wireless Radio** - Indicates whether the wireless radio feature of the Router is enabled or disabled.
- Name (SSID)** - The SSID of the Router.
- Channel** - The current wireless channel in use.
- Mode** - The current wireless mode which the Router works on.
- Channel Width** - The bandwidth of the wireless channel.
- MAC Address** - The physical address of the Router, as seen from the WLAN.
- WDS Status** - The status of WDS' connection, Init: WDS connection is down; Scan: Try to find the AP; Auth: Try to authenticate; ASSOC: Try to associate; Run: Associated successfully.

**WAN** - The following parameters apply to the WAN ports of the Router. You can configure them in the **Network** -> **WAN** page.

- MAC Address** - The physical address of the WAN port, as seen from the Internet.
- IP Address** - The current WAN (Internet) IP Address. This field will be blank or 0.0.0.0 if the IP Address is assigned dynamically and there is no connection to Internet.
- Subnet Mask** - The subnet mask associated with the WAN IP Address.
- Default Gateway** - The Gateway currently used by the Router is shown here. When you use **Dynamic IP** as the connection Internet type, the **Renew** button will be displayed here. Click the **Renew** button to obtain new IP parameters dynamically from the ISP. And if you have got an IP address **Release** button will be displayed here. Click the **Release** button to release the IP